

EZConfig-Scanning v4

Version: 4.5

Table of Contents

1	Overview	3
1.1	Supported Browser	3
1.2	Communication Interfaces Supported	3
1.3	Platform Supported	3
2	Overview of Release	4
2.1.1	Features	4
2.1.2	Compatibility	5
3	Pre-Requisites	6
4	Limitations	9
5	List of Known Issues and Workarounds	10
5.1	Known issues in current release:	10
5.2	Known Issues from previous releases:	10

1 Overview

Honeywell's EZConfig for Scanning is a free software download from <http://www.honeywellaidc.com/> that facilitates fast and easy one-to-one barcode scanner configurations. EZConfig for scanning versions 4.1 and onward have been updated to be browser-based and improved to provide both an intuitive interface and enhanced efficiency.

1.1 Supported Browser

Browser	Chrome Version 30 above (or HTML 5 supported) , Firefox Version 20 above (or HTML 5 supported), IE9, IE10, IE11
---------	---

1.2 Communication Interfaces Supported

Communication Interfaces	RS232, USB Serial, USB HID Barcode Scanner, USB HID Keyboard, USB HID SurePOS
--------------------------	--

1.3 Platform Supported

OS	Win XP with SP3 and above, Win 7 32/64 bit, Win 8 32/64
----	--

2 Overview of Release

2.1.1 Features

EZConfig-Scanning v4 is a browser based Scanner configuration tool.

Main features of 4.5 release:

- Scan Data Window, Serial Data Window - Keep a running list of commands in the 'create programming bar code' and 'command center' entry boxes.
- “Reset to device default” support from the application.
- Dropped the support for EB (Toggle device in and out of auxiliary port mode and send characters out aux port) , FF (End Format) rules in Data Formatting.
- Enhanced data capturing and Maintaining common/single EdgeBroker service & installation for Cloud and local versions of EZConfig.
- Clear pending client transactions if any at HPA once client session gets terminated.
- Usability improvements for “Configuration History”.
- IE 11 Support

Main features of 4.4 release:

- Prefix/Suffix redesign in alignment with data formatting.
- Application upgrade notification.
- Improved the data display in Serial, Scan Data Window for better readability.
- Discovery performance when working with cordless devices associated with RF Scanners.

Main features of 4.3 release:

- Data formatting redesign.
- Auto firmware upgrade for RF Scanners.
- Displaying license and plug-in as part of device discovery.
- Auto-connect post flashing operation.
- Usability improvements for “Configuration History” and “Compare & Clone” features.
- Win 8 support.
- IE10 support.

Main features of 4.2 release:

- Port communication via “Serial Data Window”.
- Capture image by providing menu commands from imaging tab.
- Aztec/Data Matrix support for 2D bar code generation.
- Image capture from selected RF Scanner.
- Auto firmware upgrade.
- Force Reader to Boot Mode support.

Main features of 4.1 release:

- Improved HF [Page Navigation, Prefix/Suffix, Data Formatting etc].
- Improved search in Disconnected Device mode by segregating the devices in to different categories.
- Progressive discovery and Auto connect to the first discovered device.
- Interfaces supported: RS 232, USB serial, USB HID, USB HID KBD, USB HID Surepos.

- Configuration History with undo capability.
- 1D/2D Barcode generation for Changed/Selected/Clone settings.
- Provides GUI Search, based on Command names/Friendly text.
- Allows Comparison between device default, current or EXM settings, device current values and clones the settings.

2.1.2 Compatibility

Corded - 1400, 1900, 1911, 7580, 3310, 1200, 1250, 1300, N5600 engine, 8600 engine (MPX), 2700 (Stratos 2700), 1500, 1910i, N4300 (NGLE-HD), 7300, 4850 (MPX DR), 1280iFR-3 (Rifle)

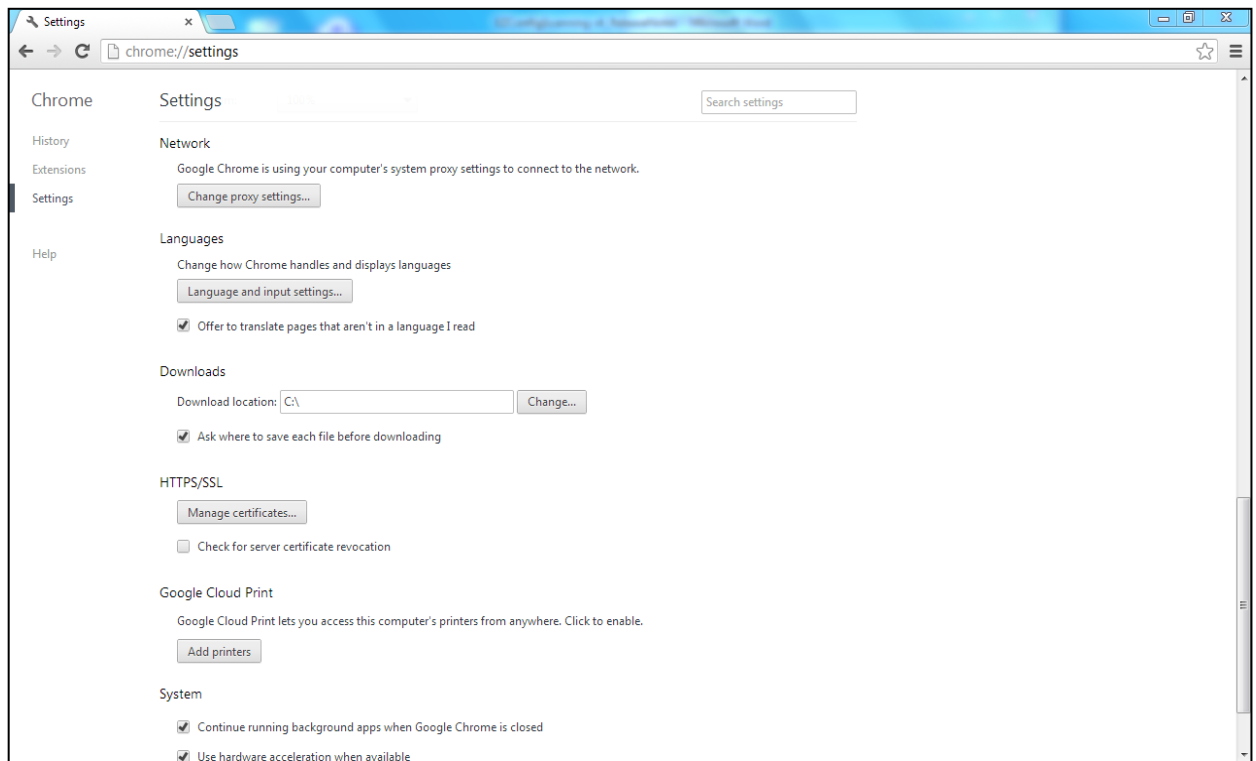
Cordless - 1902, CCB, HAP, 1202, CCB00

3 Pre-Requisites

It is recommended to ensure that your browser has the below settings prior to work with the EZConfig-Scanning v4 application.

1. Chrome Settings:

- Go to Settings, Click on “Show advanced settings...”
- Under “Downloads” option, ensure that “Ask where to save each file before downloading” option is selected.



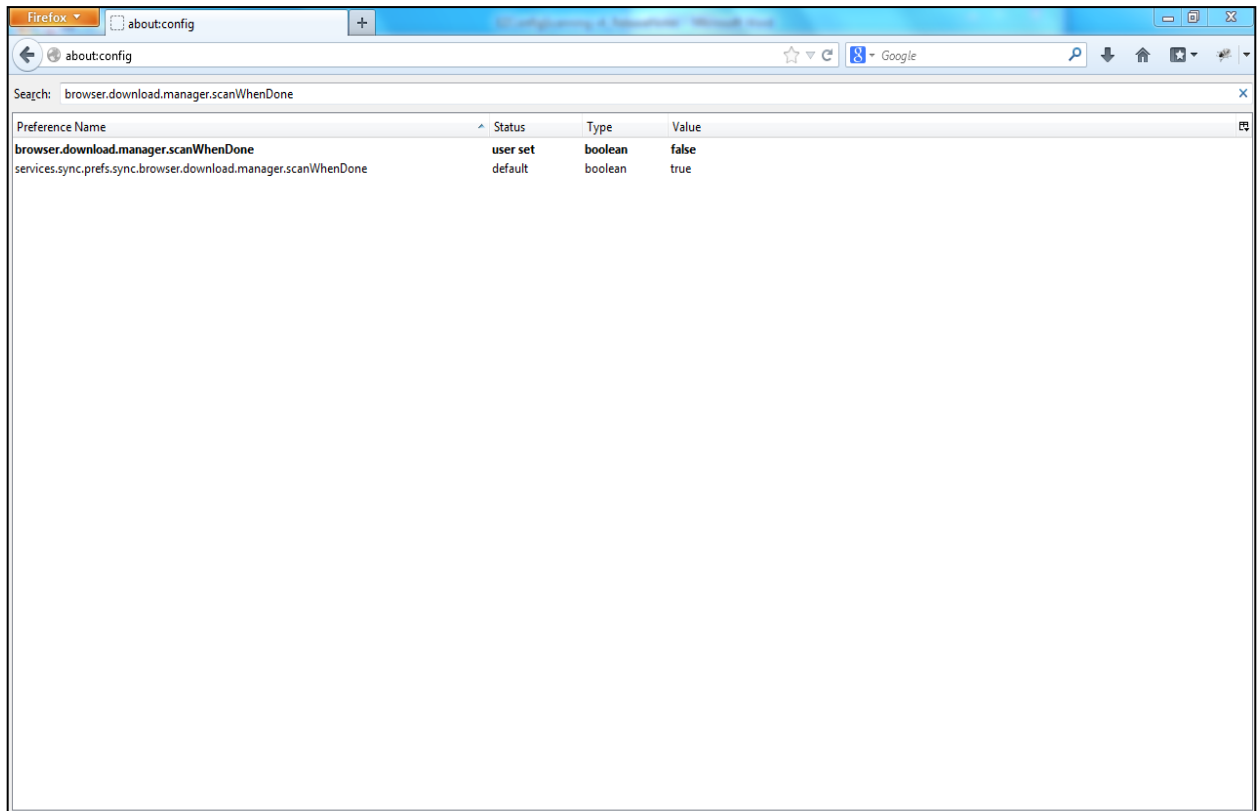
- Always ensure to launch Chrome with the following settings. Ensure to close any other Chrome running instances prior to apply it.

chrome.exe --allow-file-access-from-files --enable-file-cookies

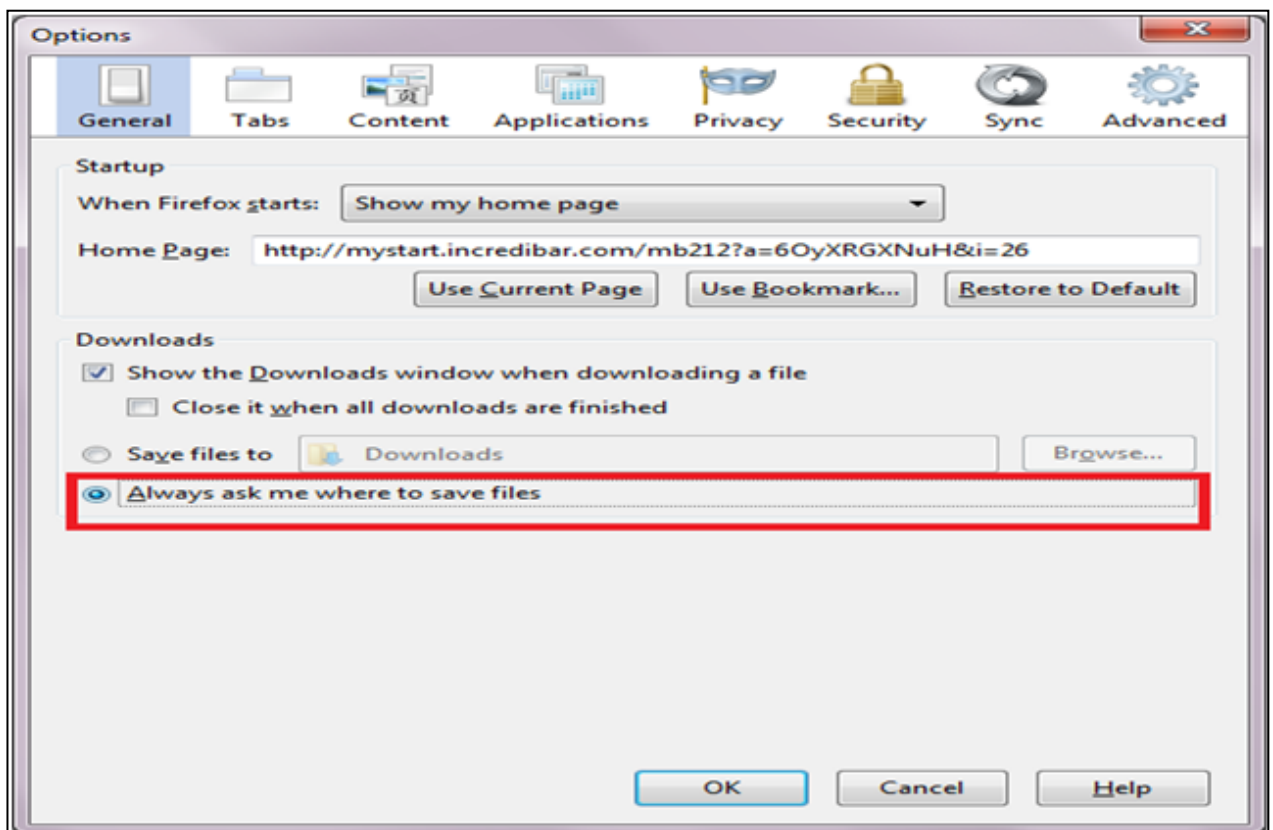
ex: C:\Program Files\Google\Chrome\Application>chrome.exe --allow-file-access-from-files --enable-file-cookies

2. Firefox Settings:

- Open Firefox, In the url tab, type “about:config”.
- In the configuration settings, search for preference “browser.download.manager.scanWhenDone” and set the value to false.

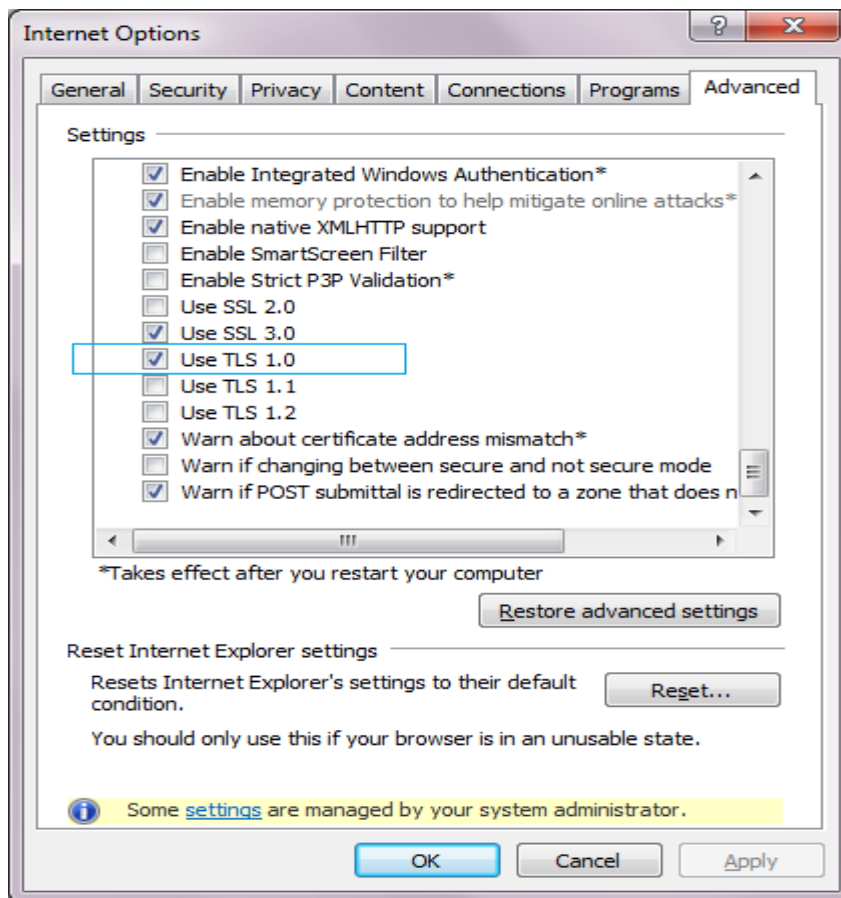


- Press Alt+F , Go to Tools->Options.
- Under General, Go to Downloads, ensure that “Always ask me where to save files” option is selected.



3. **IE Settings**

- Enable the 'Use TLS 1.0' settings. Under Internet Options -> Advanced -> Security -> select "Use TLS 1.0"



4 Limitations

- **Virtual COM support** – The current version of EZConfig only supports Virtual COM ports generated by the HSM USB Serial Driver. Virtual COM ports generated by other drivers (i.e. ports that come up when using RS232 to USB adaptor) are not supported during discovery operation. If you still need to use such ports, Change the value of “SupportVirtualCOM” in the file “EZCSCfg.xml” under installation path to “1” from the default value “0”, power cycle the device and refresh EZConfig application.
 - If the discovery/configure device operation freezes in the middle, the suggested work around is to clear the registry entries under the path “HKEY_LOCAL_MACHINE\HARDWARE\DEVICEMAP\SERIALCOMM\”, power cycle the device and refresh EZConfig application. If the problem (application hang) still persists, reset the “SupportVirtualCOM” in the file “EZCSCfg.xml” under installation path to default value “0” and refresh the application.
- Image Capture supports JPEG, BMP formats for all browsers. TIFF format is supported only in IE. Rest all formats are not supported.
- In IE browser, users may notice alerts while running the application due to browser security settings. This is expected behavior. Click Yes or “Allow ActiveX content” in the resulting alerts.
- Force Reader to Boot Mode functionality is supported only for Xenon based devices in RS232 interface at 115200 baud rate and 8N1 data bits.
- **FRLE support** - FRLE (7300) device defaults to PWRMOD2 that causes it to enter sleep mode quickly. Due to this behavior, EZConfig users may encounter errors while performing operations in “Scan Data Window” and “Serial Data Window”. **The suggested work around** is to set the PWRMOD setting to 0 (zero) prior using “Scan Data Window” and “Serial Data Window”.
- Perform install and uninstall of EZConfig with Admin privileges.
- For un-installation of EZConfig, It is recommended to do it from Start menu-> All Programs->Honeywell->EZConfig-Scanning v4-> Uninstall EZConfig-Scanning v4 with admin privileges.
If un-installing it from Control Panel->Add/Remove Programs, perform uninstall of “EZConfig-Agent” followed by “EZConfig-Scanning”.

5 List of Known Issues and Workarounds

5.1 Known issues in current release:

S.No	JIRA ID	Issue Description
1	EZCS4-1297	<p>Cancel operation not handled as part of EZConfig installation [Install/Repair/Un install].</p> <p>Frequency of occurrence: Frequent</p> <p>Severity: Marginal</p> <p>Workaround: Re launch the setup to perform the required operation. Ex: Instead of cancelling during installation – Re launch setup and perform un installation.</p>

5.2 Known Issues from previous releases:

S.No	JIRA ID	Issue Description
1	EZCS4-1229	<p>Keyboard layout is not rendered properly while creating/editing prefix/suffix in IE10 browser.</p> <p>Frequency of occurrence: Random</p> <p>Severity: Marginal</p> <p>Workaround: Perform scroll up/down or click on the keyboard layout.</p>
2	EZCS4-1221	<p>Tooltip for the drop down items in configuration settings page is not displayed properly in IE10 browser.</p> <p>Frequency of occurrence: Frequent</p> <p>Severity: Marginal</p> <p>Workaround: Use Firefox/Chrome/IE9 browser.</p>
3	EZCS4-1144	<p>Flash operation not working in IE9, when firmware file is located over network drive.</p> <p>Frequency of occurrence: Frequent</p> <p>Severity: Minor</p> <p>Workaround: Use Firefox/Chrome/IE10 browser for flashing operation.</p>
4	EZCS4-1140	<p>License, plug-in information not seen consistently for 1900 and CCB/1902.</p> <p>Frequency of occurrence: Occasional</p> <p>Severity: Major</p> <p>Workaround: Upgrade device to latest version of firmware.</p>

		<p>Issue not seen with following firmware versions: Xenon corded: BI000612AAA.moc, Xenon CCB: BK000169AAA.moc Xenon Cordless (RF Scanner): BJ000180AAA.moc.</p>
5	EZCS4-1129	<p>Flash operation for Stratos 2700 device not working via auto firmware upgrade from IE browser.</p> <p>Frequency of occurrence: Occasional</p> <p>Severity: Minor</p> <p>Workaround: Use Firefox or Chrome browser for flashing operation.</p>
6	EZCS4-1127	<p>Observed data leakage when working with CCB/1902 connected in USB KBD interface.</p> <p>Frequency of occurrence: Frequent</p> <p>Severity: Major</p> <p>Workaround: Switch to different interface.</p>
7	EZCS4-1042	<p>Application crashing (Browser getting closed) when trying to use 'Print bar code generation' on Chrome browser v29</p> <p>Frequency of occurrence: Regular – Browser limitation.</p> <p>Severity: Minor</p> <p>Workaround: Update chrome to latest version – version above 30.</p>
8	EZCS4-1007	<p>Observed data leakage when working with Corded/CCB/1902 connected in USB KBD interface and REMIFC is set to 0</p> <p>Frequency of occurrence: Frequent</p> <p>Severity: Major</p> <p>Workaround: Switch to different interface.</p>
9	EZCS4-951	<p>Image capture does not work for CCB with RF scanner in RS-232 interface configured with lower baud rates (9600) and DPS Settings (Ex: 702).</p> <p>Frequency of occurrence: Regular – Device limitation.</p> <p>Severity: Major</p> <p>Workaround: None.</p>
10	EZCS4-947	<p>Image capture operation is failing for 'cropped' Image type for cordless devices, if the base image cropping parameters (IMGWNL, IMGWNR, IMGWNT and IMGWNB) are not in sync with RF Scanner parameters.</p> <p>Frequency of occurrence: Regular – Device limitation.</p> <p>Severity: Minor</p> <p>Workaround: Change the image cropping parameters values in Sync with RF Scanner before image capture operation.</p>

11	EZCS4-894	<p>In connected/disconnected mode when the response for the “Google Analytics” request is delayed, UI rendering is getting delayed/not proper.</p> <p>Frequency of occurrence: Rare – Known issue with the Google Analytics.</p> <p>Severity: Minor</p> <p>Workaround: Make sure the internet connectivity is proper or completely disabled.</p>
12	EZCS4-836	<p>When working with cordless devices (CCB/HAP), color supported formats are shown on UI, even when the associated RF scanner doesn't support color.</p> <p>Frequency of occurrence: Regular – Shall be addressed in future releases.</p> <p>Severity: Minor</p> <p>Workaround: None</p>
13	EZCS4-823	<p>Publisher name displayed as "Unknown" when trying to uninstall from control panel</p> <p>Frequency of occurrence: Regular – Packaging tool limitation.</p> <p>Severity: Marginal</p> <p>Workaround: None</p>
14	EZCS4-692	<p>Multiple instances of application for configuring devices in not supported.</p> <p>Frequency of occurrence: Always - Shall be addressed in future releases.</p> <p>Severity: Minor</p> <p>Workaround: Use one instance at a time.</p>
15	EZCS4-603	<p>Disconnect notification not seen when connected to RS232 device and unplugged the power supply/cable.</p> <p>Frequency of occurrence: Always – Shall be addressed in future releases.</p> <p>Severity: Minor</p> <p>Workaround: Refresh the browser.</p>
16	EZCS4-591	<p>No barcode data seen in scan window for 7580 scanner with TRMUSB128 interface.</p> <p>Frequency of occurrence: Regular – Device limitation.</p> <p>Severity: Minor</p> <p>Workaround: Need to enable barcode scanning in the device using the command "X161\X0D1" for reading barcode data and disable using the command "X160\X0D1".</p>
17	EZCS4-484	<p>"Google Chrome is unresponsive. Re launch now?" message is seen, when trying to launch the application post installation in the Finish Dialog.</p> <p>Frequency of occurrence: Rare – Known issue with the Chrome browser.</p> <p>Severity: Minor</p>

		Workaround: Close the browser and re launch it again.
18	EZCS4-427	Observed sometimes “EZConfig-Scanning v4” icon for the chrome instance. Frequency of occurrence: Rare – Known issue with the Chrome browser. Severity: Minor Workaround: None